

—Standard Valves—

4222-B
Valve

4222-B VALVE

HALF WAVE WATER COOLED RECTIFIER.

SPECIFICATION.

Cathode.

Pure Tungsten filament.
Constant voltage type.

Water Jacket.

Type MS.1362 Grp. I for anode dissipation up to 6 Kw.

Type MS.1362 Grp. 20 for below panel connection for anode dissipation up to 6 Kw.

Type 223 LU 1A for anode dissipation over 6 Kw.

Dimensions.

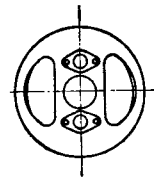
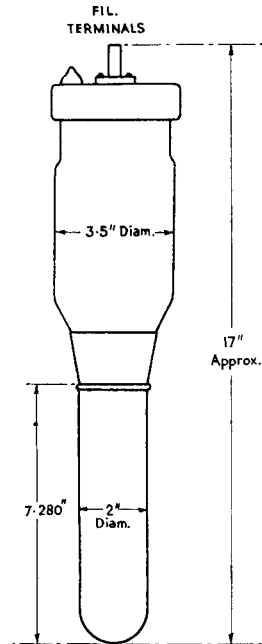
Overall length	17" (43 cms.)
Overall diameter	3½" (8.9 cms.)
Net weight	2½ lbs. (1,150 gms.)

Water Flow.

2 gallons per minute.

Constants.

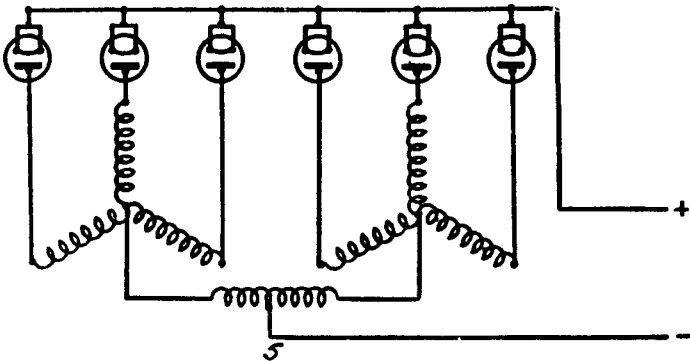
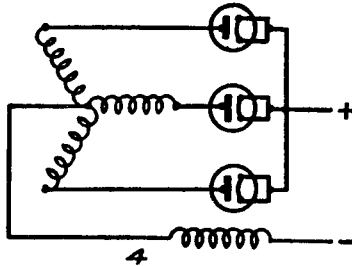
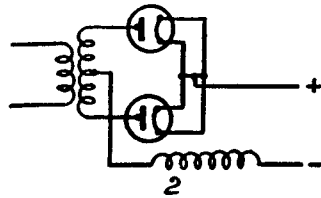
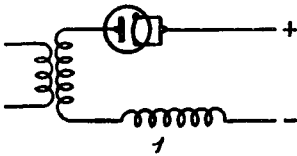
Filament voltage	22 volts
(exact filament voltage is marked on bulb of each valve)	
Nominal filament current	41 amps.
Total emission	6 amps.
Maximum peak inverse voltage	45,000 volts
Maximum anode dissipation	10 Kw.



—Standard Valves—

TYPICAL OPERATING CONDITIONS.

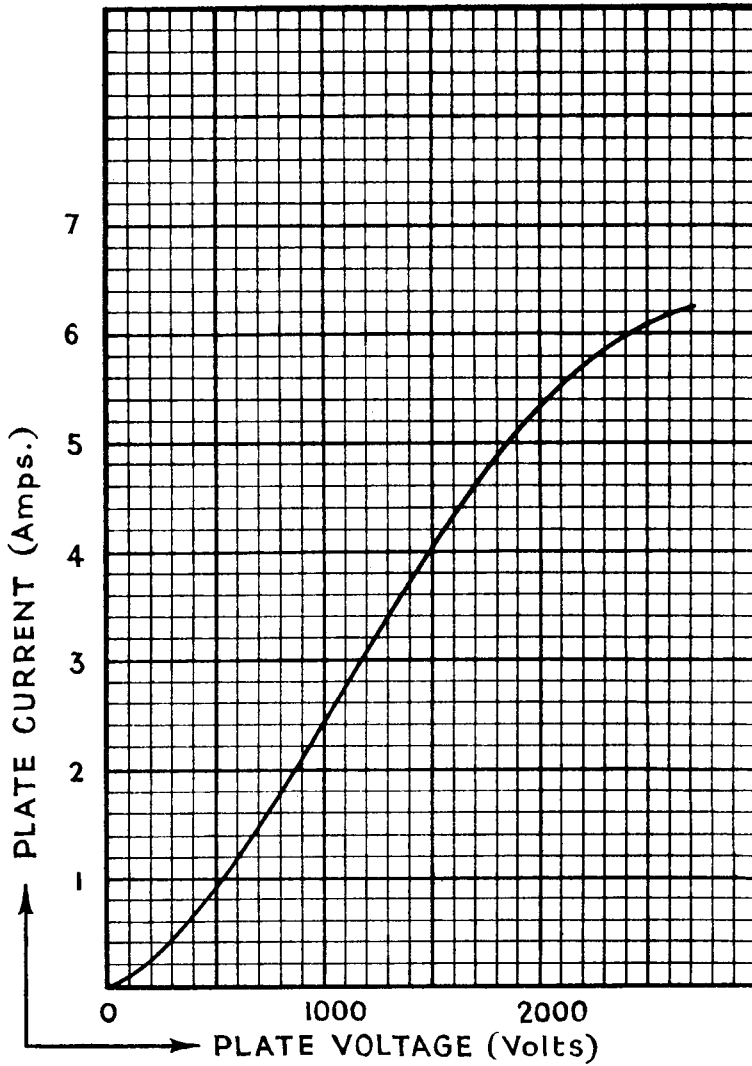
Circuit	Number of valves	Load potential in volts	Load current in amps.
1	1	7,000	1.5
2	2	14,000	3.0
4	3	22,500	4.3
5	6	22,500	8.5



—Standard Valves—

4222-B
Valve

This curve is taken with A.C. filament heating, anode voltages being referred to the centre point of the filament.



PRINTED IN
ENGLAND